

CONVEYOR ACCESSORIES

FLOWAY SERIES



Wheel track



Application area

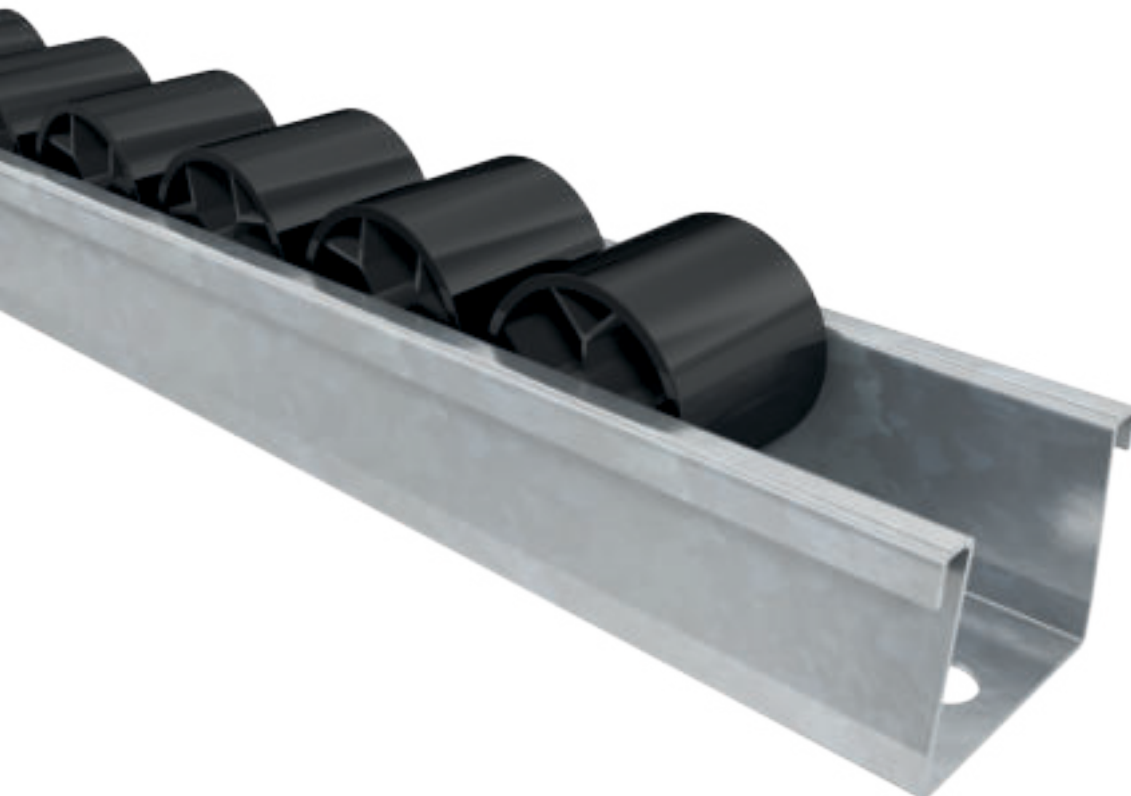
The track is universally applicable and suitable for light materials. It can be used in gravity conveyors, pushing and also as side guide. They are generally used in order picking racks.

Secure guides

The track is designed so that it prevents an opening and jumping out of the wheels under load.

Robust construction

The continuous steel shaft guarantees high stability. The secure shaft support at the outer wings of the rail ensures that free-running of the wheels is also ensured under load.





CONVEYOR ACCESSORIES FLOWAY SERIES

Wheel track

Technical data

General technical data	
Platform	1500
Temperature range	-30 to +5 °C
Lengths	504 mm to 5500 mm
Wheel pitch	28 mm, 42 mm, 56 mm
Shaft diameter	3 mm
Wheel track wall thickness	0.8 mm
Material	
Wheel track	Zinc-plated steel
Shaft	Zinc-plated steel
Wheels	Polyethylene, RAL9005 (jet black), RAL1021 (yellow), RAL3020 (red)
Anti-static version	No