

CONVEYOR ACCESSORIES

SERIES 5000



Steel ball transfer unit



Application area

Alignment of medium-heavy and heavy materials, such as plates or containers with a smooth bottom. For pushing, e.g. steel or wooden plates. Suitable for applications that require an upside-down installation.

Direction-independent operation

The use of balls allows transporting the material in every direction. Crossings and switches can also be implemented easily. In addition, particularly soft running balls are being used.

Good protection against dust and splashing water

For variants with steel balls, a felt seal keeps out dust and splashing water. Variants with balls in stainless steel design also feature a long corrosion resistance.

Secure support

During operation, support balls circulate under the main ball. This accomplishes a constant and optimal support of the material.





CONVEYOR ACCESSORIES

SERIES 5000

Steel ball transfer unit

Technical data

General technical data	
Platform	5000
Max. load capacity	22,000 N
Max. conveyor speed	0.3 m/s
Temperature range	-30 to +40 °C
Material	
Ball	See load capacity table
Housing material	Zinc-plated steel (black)
Anti-static version	Yes (< 10 ⁶ Ω)

To ensure optimum load capacity, it is advised that all ball transfer units are positioned at the exact same level.

Additional variants available on request.

Load capacities of series 5000

The following load capacity table refers to a temperature range of -30 to +40 °C.

Fastener	Ø of ball [mm]	Ball material	Material of support balls	Max. static load [N]	Article number
Base flange	12.7	Chrome steel	Chrome steel	460	S-1100048
	25.4	Chrome steel	Chrome steel	2250	S-1001365
	25.4	Chrome steel	Chrome steel	3750	S-1001366
	38.1	Chrome steel	Chrome steel	11000	S-1001367
	50.8	Chrome steel	Chrome steel	22000	S-1001368
Threaded pin	12.7	Chrome steel	Chrome steel	460	S-1001359
	25.4	Chrome steel	Chrome steel	2250	S-1001360
	25.4	Chrome steel	Chrome steel	3750	S-1001361
	38.1	Chrome steel	Chrome steel	11000	S-1001362
	50.8	Chrome steel	Chrome steel	22000	S-1001363
Head flange	12.7	Chrome steel	Chrome steel	460	S-1001369
	25.4	Chrome steel	Chrome steel	2250	S-1001370
	25.4	Chrome steel	Chrome steel	3750	S-1001371
	38.1	Chrome steel	Chrome steel	11000	S-1001372
	50.8	Chrome steel	Chrome steel	22000	S-1001373

CONVEYOR ACCESSORIES

SERIES 5000



Steel ball transfer unit

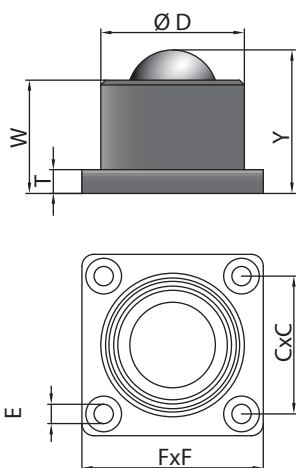


Fastener	Ø of ball [mm]	Ball material	Material of support balls	Max. static load [N]	Article number
Flush installation (press fit)	12.7	Chrome steel	Chrome steel	460	S-1001356
	38.1	Stainless steel	Stainless steel	11000	S-1001378
External suspension	38.1	Chrome steel	Chrome steel	9600 at max. deflection	S-1100285

Spring pretension of "External suspension" variant = 454 kg

Dimensions

Bottom flange (for screw fastening)



Article number	Ø Ball [mm]	Ø D [mm]	Y [mm]	W [mm]	T [mm]	F x F [mm]	C x C [mm]	E [mm]
S-1100048	12.7	23.8	22.2	18.4	3.2	Ø 44.5	Ø 34.9	2 x Ø 3.6
S-1001365	25.4	44	41.3	35.7	4.8	Ø 57.2	Ø 44.5	4 x Ø 6.1
S-1001366	25.4	50	44.5	38.1	6.4	Ø 76.2	Ø 57.9	4 x Ø 8.1
S-1001367	38.1	60	61.5	48.8	12.7	Ø 76.2	Ø 57.9	4 x Ø 8.1
S-1001368	50.8	100	98.4	84.1	9.5	Ø 127	Ø 101.6	4 x Ø 11.1*

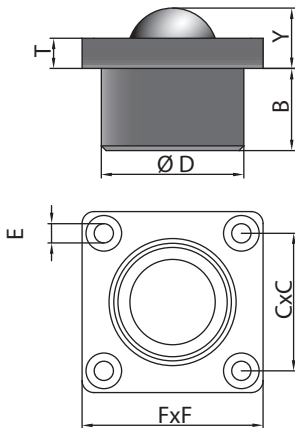
* not countersunk



CONVEYOR ACCESSORIES SERIES 5000

Steel ball transfer unit

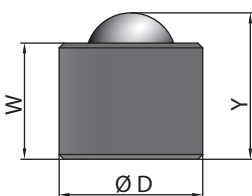
Head flange (for screw fastening)



Article number	Ø Ball [mm]	Ø D [mm]	Y [mm]	B [mm]	T [mm]	F x F [mm]	C x C [mm]	E [mm]
S-1001369	12.7	23.8	11.2	11	3.2	Ø 44.5	Ø 34.9	2 x Ø 3.6
S-1001370	25.4	44	10.3	31	4.8	Ø 57.2	Ø 44.5	4 x Ø 6.1
S-1001371	25.4	50	12.7	31.8	6.4	Ø 76.2	Ø 57.9	4 x Ø 8.1
S-1001372	38.1	60	25.4	34.6	12.7	Ø 76.2	Ø 57.9	4 x Ø 8.1
S-1001373	50.8	109.5	33.3	65.1	19.1	Ø 127	Ø 101.6	4 x Ø 10.2*

* not countersunk

Flush installation (press fit)



Article number	Ø Ball [mm]	Ø D [mm]	Y [mm]	W [mm]
S-1001356	12.7	20.6	19.1*	15.3
S-1001378	38.1	60.3	61.5	48.8

* total height including locking pin 22.3 mm

CONVEYOR ACCESSORIES

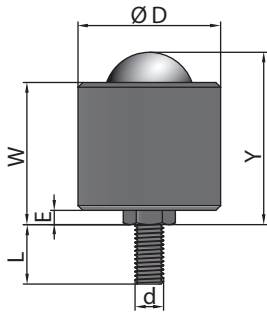
SERIES 5000



Steel ball transfer unit



Threaded pin



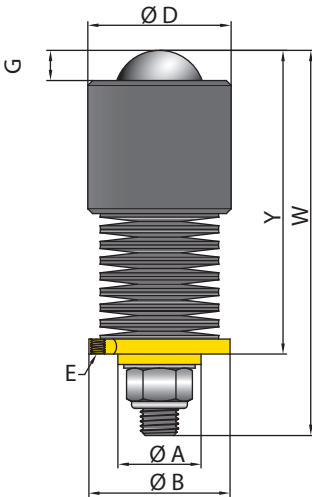
Article number	Ø Ball [mm]	Ø D [mm]	Y [mm]	W [mm]	L [mm]	d [mm]
S-1001359	12.7	20	19.1	15.3	16.1	M8 x 1.25
S-1001360	25.4	44	48.3	42.7	25	M12 x 1.75
S-1001361	25.4	50	51.3	44.9	25	M12 x 1.75
S-1001362	38.1	60	73.5	60.8	40	M20 x 2.5
S-1001363	50.8	100	105	90.7	54	M24 x 3



CONVEYOR ACCESSORIES SERIES 5000

Steel ball transfer unit

External suspension



Article number	Ø Ball [mm]	Pretension [kg]	Max. deflection (recd.)	Load at max. deflection [kg]	Ø D [mm]	Y [mm]	W [mm]	Ø A [mm]	Ø B [mm]	Mounting holes E (Ø Pitch circle) [mm]	G [mm]
S-1100285	38.1	454	11.1	960	60.3	129.2	162.1	35	59.4	M6 x 3 (Ø 50.8)	12.7